



# insite

ISSUE  
72

March 2022



#RGSolidGround  
18 YEARS DRILLING & ADVICE

REGULAR NEWS AND VIEWS FROM **ROGERS GEOTECHNICAL SERVICES**

> INVESTING. ACHIEVING.



LIFE ON QUALITY STREET

H&S MATTERS

INSITE MEETS NICK WILDING

DID YOU KNOW?

CELEBRATING WOMEN

ASK GRANNY!

HIT 'EM FOR SIX!

RGS GOES GLOBAL!

## Welcome to RGS insite issue 72

Our regular newsletter celebrates 18 years of drilling and keeps you up to date with RGS and industry news.

**Rogers Geotechnical Services Ltd** are **site investigation specialists** offering ground investigation and geotechnical services to developers, builders, structural and consulting engineers, architects, insurance companies, local authorities, piling and foundation engineers, private individuals and other geotechnical consultants.

INSITE  
ISSUE  
72

# LIFE ON QUALITY STREET!

Environmental  
Geotechnical  
Specialists



In last month's Insite, we announced passing our annual ISO audits with **flying colours**. But what does this actually mean to our team – and to you, our valued clients?

Most of us are familiar with ISO, or the 'International Organisation for Standardisation', a set of global standards developed to ensure the quality and safety of products, services and systems.

In the commercial world, companies are continuously striving towards one goal: **efficiency**. By becoming more efficient, they can provide a **better quality of product or service to their customers** - and at RGS, we are very much in the business of doing things better!

#### RGS: PROUDLY ISO-CERTIFIED SINCE 2005!

The majority of our clients work in the **construction sector**, mainly in the project pre-development stage, where both **quality** and **safety** are **absolutely critical to minimising risk**. Yet it's one thing to say these things matter to us - and another to prove it! Our ISO accreditations confidently **assure our clients** we have implemented **globally approved systems** and processes, **ensuring** our people and products are safe and steering us towards **efficient, high-quality project outcomes**. That's better for us - and better for you!



**TOBY**  
RGS LAB  
QUALITY  
MANAGER



ENVIRONMENTAL  
INSITE  
ISSUE  
72



## ➤ ISO 9001: QUALITY MANAGEMENT

ISO 9001 was our original certification, first completed way back in 2005...! It confirms our **quality management systems** are **deeply entrenched**, constantly helping us deliver the right solution at the correct cost and efficiently.

Reviewed annually, **the certificate ensures** we continue to **focus on quality** in all that we do - which, thanks to being deeply embedded into our processes, is never an issue for RGS, shaping countless business decisions and driving us forwards for seventeen years!

.....

## ➤ ISO 45001: HEALTH & SAFETY MANAGEMENT

It goes without saying that **safety is critical to our business**. Whether we're at one of our depots or attending client sites across the UK, **ISO 45001 H&S processes keep our teams, clients, contractors and visitors safe**, whatever their role or responsibility.

.....

## ➤ ISO 14001: ENVIRONMENTAL MANAGEMENT

ISO 14001 certification proves that our organisation **cares deeply about the world we live in**, with a **fully implemented environmental management system**.

It ensures we are actively working on **reducing our environmental impact** at all times, choosing sustainable processes to minimise our carbon footprint.

As a company, we take a holistic approach to overcoming environmental issues - **doing all we can** to cut down on air pollution, manage waste efficiently and mitigate climate change.

### **READ MORE ABOUT HOW WE HELP THE ENVIRONMENT IN OUR NEW H&S MATTERS FEATURE!**

Quality and safety will continue to underpin our operations and drive us forwards for the next twenty years and beyond. Rest assured, we're staying right here on Quality Street!

.....

**LOOKING FOR SUPPORT WITH SOIL SAMPLING? DOES YOUR DEVELOPMENT REQUIRE A FULL GROUND INVESTIGATION? YOU CAN RELY ON THE TEAM AT RGS TO PROVIDE A SAFE, HIGH QUALITY SERVICE - WHATEVER YOUR NEEDS. CALL OUR HELPFUL TEAM ON [01484 604354](tel:01484604354)**

NEW FEATURE

## H&S matters



Workplace health and safety is a minefield. Yet it is a subject businesses need to understand if they're to **minimise risks and prevent accidents or injuries** – especially when working in or closely with companies in the construction sector.

After almost **twenty years in operation**, you can imagine the team at RGS has **learned a LOT about H&S**, adapting our processes in line with the latest governance to remain compliant and ensuring site safety along the way. In our new monthly feature, we're considering its many aspects and sharing our H&S tips and tricks one topic at a time - starting with...

### Environmental Management

It's not something everyone automatically associates with health and safety, yet the two work hand in hand. Consider any green initiatives your business has in place today - recycling, safe waste disposal or reduced energy consumption - and you'll soon see how they might impact your people's health and safety if not managed correctly.

Nowadays, most companies are 'green conscious' to some degree, and rightly so. With spiralling energy costs and government levies encouraging greener behaviours, it has never been more necessary to establish a system to help protect our environment from further damage.

Environmental  
Geotechnical  
Specialists





The UK is committed to **cutting** greenhouse gas emissions by **80%** of its level in 1990 by 2050 - and with businesses responsible for almost half of the UK's CO<sub>2</sub> emissions, it's no wonder companies like RGS are in the firing line. The **climate change levy** introduced in 2001 taxes businesses on their energy use to drive down consumption and reduce air pollution. Further, waste disposal costs such as the **Landfill Tax** (introduced in 1996 and rising every year) aim to reduce unnecessary waste-producing toxic gases at landfill sites.

**There are multiple ways in which your business can look to minimise its environmental impact, such as:**

**REDUCING** **emissions** resulting from production or logistics

**SWITCHING** to **energy efficient** products and equipment

**EFFICIENT** use of **water / raw materials / packaging / transport**

**MANAGING** **waste** and **recycling**

Of course, implementing critical business changes doesn't happen overnight - and rather than being a final destination, 'going green' is an ongoing journey that requires a constant commitment. At RGS, we began that journey seriously back in 2015. While it remains fluid, the steps we've taken between then and now have had an incredible impact on our business both internally and externally.

It began by implementing an **environmental management system** (EMS), a process of identifying ways to increase our energy efficiency and reduce waste and pollution across our business and then manage our actions ongoing. At RGS, our system is simple but effective and keeps everyone in the company aware of our environmental responsibilities.

### Steps to creating a sustainable EMS

**PRODUCE AN ENVIRONMENTAL POLICY AND EDUCATE STAFF ON HOW TO FOLLOW IT!**

**AUDIT THE FACILITY, EQUIPMENT AND WORK PROCESSES FOR ENERGY AND WASTE INEFFICIENCIES**

**SET TARGETS TO IMPROVE YOUR ENVIRONMENTAL PERFORMANCE**

**REVIEW YOUR PROCESSES AND PERFORMANCE REGULARLY**

### Our green commitment - day in, day out!

The team at RGS are all on board with our greener, cleaner processes.

➤ We **maintain** and **service all rigs and vehicles** regularly to ensure they operate efficiently and minimise energy consumption (including daily and weekly checks)



- We provide regular **refresher training** about our environmental policy - encouraging staff to minimise the use of lighting and heating
- We ask employees to **share a car** when attending sites to help reduce vehicle emissions
- We use **vegetable oil** for the drilling rigs and threads - which is kinder to the environment than synthetic oils
- We hold **virtual meetings** to minimise face to face visits and reduce travel emissions
- We provide clear **recycling points** on all of our sites to help reduce and manage waste
- We use a **6 Litre bin** for plastic, paper and cardboard recycling, emptied fortnightly
- We use a **designated soil skip** to dispose of waste samples safely and correctly
- We carry **spill kits** to site visits for safe disposal of materials
- We use **bentonite** to plug boreholes, preventing contamination in water systems
- We **print paper responsibly** using double-sided black and white settings, and send our reports electronically

Remember, however major or minor, every change you make helps keep people safe and improves your bottom line costs - not only by reducing the government levies but also by implementing smarter, efficient systems that cut op-ex significantly month on month. That's something any business likes the sound of.

Our new monthly H&S feature draws from information provided by our external advisors, **David** and **Rachel** of **WBL Consultants Ltd**. The dynamic duo are kept very busy at RGS, completing our **MONTHLY AUDITS** and **INSPECTION REPORTS** at all of our **offices, Fieldworks Warehouse** and **Laboratory**, in addition to our **Landlord** report.

They also carry out **staff inductions**, annual **H&S refresher training**, **Tool Box talks**, **random drug and alcohol testing** and **face mask fittings**. Pretty much anything H&S, and we have these two to thank for it!

If your organisation needs professional guidance about health and safety, we recommend contacting WBL Consultants Ltd - **email David or Rachel on [wblconsultants@gmail.com](mailto:wblconsultants@gmail.com) to arrange a chat.**

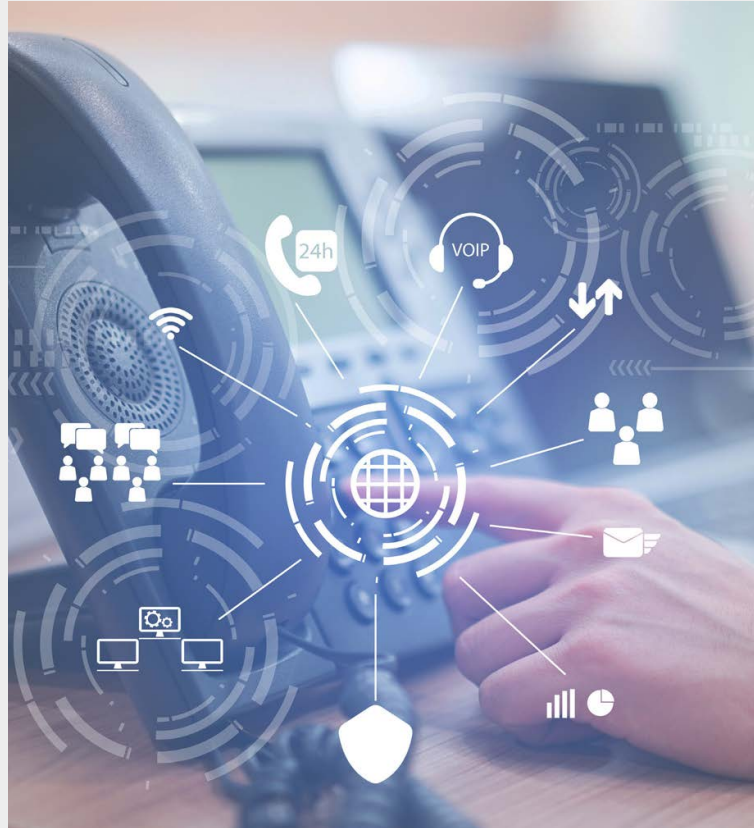
**HOW CAN RGS HELP YOU? WHATEVER YOUR REQUIREMENT, FOR PROFESSIONAL GUIDANCE AND A COMPETITIVE QUOTE CALL OUR HELPFUL TEAM ON [01484 604354](tel:01484604354)**



RGS INVESTMENT

Did you know ...

## RGS has a new VOIP phone system in all its uk depots?



Our facilities have recently **undergone an upgrade**, with a brand-new VoIP telephone system rolled out across our UK depots.

The **state-of-the-art** kit uses the internet to deliver a **clearer, higher quality** phone call than ISDN - a technology the UK is switching off in 2025.

Using VoIP means our staff can communicate with the outside world to greater effect, delivering an **improved customer experience** with every conversation.

Now, we'd say **that's an upgrade worth shouting about!**

.....

**REMEMBER, TEAM RGS IS ALWAYS JUST A PHONE CALL AWAY.  
TALK TO US ABOUT YOUR NEXT PROJECT, HOWEVER LARGE OR SMALL.  
CALL OUR HELPFUL TEAM ON [01484 604354](tel:01484604354)**

INSITE MEETS

**Nick Wilding** PA TO THE MD AND ACCOUNTS TEAM

HERE  
TO  
HELP.



What does your role involve? Describe a **typical day**.

My primary responsibility is assisting **Emma**, our MD, our **Accounts team**, **Directors** and **heads of department**. I also link with our development team, responding to client enquiries and preparing new contracts.

Thanks to my keen interest in Health and Safety, I work closely with our external advisors, David and Rachel from **WBL Consultants**, who provide fantastic support to RGS on H&S to keep everybody safe.

On that note, I'm excited to be leading on a new monthly H&S feature for Insite, which will help everyone internally with their CPD and also gives our customers some pointers to support their workplace health and safety strategy.

How does your role help our RGS clients?

I see myself playing a key role in helping new and existing clients along their journey, meeting their requirements, however large or small the project. That said, it would be impossible to do this on my own, and working with our excellent team at RGS allows me to give our customers a first-class ground investigation and support service they deserve.

Environmental  
Geotechnical  
Specialists







### What do you **enjoy most** about what you do?

As you might imagine, this is a varied role that taps into many different business areas. I love the variety of being involved with all departments - **engineering**, **fieldworks**, the **laboratory** and **development** - and providing daily support to the **department heads**.

Then there's dealing with **accounts** and chatting with our suppliers about **orders** and **fulfilment**. And, of course, supporting our **ever-busy MD, Emma!** Every day is different from the last, some more challenging than others but always **100% rewarding**.



project team

engineering team

tendering

testing

project support

### If money was **no object**...

Hmm... This is a really interesting question and one I have never given any thought to! I'm not even sure how much money one needs these days for it to become no object! I'll have to tell you when I get there. For now, I'm grateful to have a **fulfilling job** with a **great team** and the **best customers**, and it pays enough pennies for **some weekend fun!**



INVESTING IN PEOPLE

## Celebrating Women

### International Women's Day



**CHARLIE CAMPION**  
GEOENVIRONMENTAL  
ENGINEER

**VAL LETCH**  
LABORATORY  
SUPPORT

**KATIE WALLETT**  
SENIOR  
PROJECT MANAGER

**CHARLOTTE MASON**  
GEOENVIRONMENTAL  
ENGINEER

**HATTIE HENSHALL**  
GRADUATE GEOENVIRONMENTAL  
ENGINEER

Every March, people across the globe celebrate **International Women's Day**. This year's event highlighted how women have the #powertochange the world.

Of course, this is a belief we fully support at RGS, with **many females** working tirelessly in the business to affect change for our clients - from overseeing challenging projects and upskilling teams to running the show (hard-hats off to **Emma Lewis MD**, for smashing it in a so-called 'mans' environment!).

Those who know Emma will attest to her commitment to championing women in the geotechnical workspace - and not just women, but all young people looking forwards to a career in our sector.

This **June 13**, Emma is speaking at the '**Step into the Future**' event at **Greenhead College** in Huddersfield, explaining the many career paths available at companies like RGS, the range of skills needed, and various entry routes.



**EMMA LEWIS MD**

**gc** Greenhead College  
Be exceptional

The talk forms part of a **week-long careers event** for their Year 12s to attend workshops, participate in research tasks and hear from various professions about what they do. Thirty-nine students have already expressed an interest in learning more about **Geology and Environmental careers**, with Emma sure to provide **valuable insight and motivation** to set them on the right career path.

**We can't wait to hear everyone's questions about working in geotech!**

THE  
INSIDE  
ISSUE  
72



WHAT DO YOU WANT TO KNOW?

## Ask Granny!



One thing we know about Granny Rogers is how much she valued community. Living remotely as she did, Granny relied heavily on the people around her for support and instilled into son Steve (and he into us!) the **criticality of closeness** and being the good Samaritan to help others however you can.

It's fitting, then, our team was asked the following question recently:

What do RGS do to help the local community?

While it has little to do with our geotechnical services, it's one we felt worth answering nonetheless since it addresses our views on the world around us. And those living or working close by to one of our depots may frequently hear about what we've been up to, but we're sure plenty of you have no idea!

**The short answer to the question is lots** - including one community initiative which the company is proud to have become associated with this year. **Kirkwood Hospice** in Huddersfield has provided care for local people living with **life-limiting illnesses** since 1987. As a charitable trust, it continues to rely on donations to fund its incredible service to families in the Kirklees area, and through the **Kirkwood Business Group**, local businesses and organisations like RGS are now able to contribute and help the hospice reach its financial goals.

Thank you to our incredibly kind-hearted board for showing Kirkwood Hospice the **ongoing support** it deserves with a monthly donation!

Remember to send your question to 'Granny', whatever the subject, and our rock-tastic team will provide an answer. Simple or tough, we are all ears!

CLICK HERE TO SEND US YOUR BURNING GEOTECHNICAL QUESTIONS  
[NEWSLETTER@ROGERSGEOTECH.CO.UK](mailto:NEWSLETTER@ROGERSGEOTECH.CO.UK)

## insite73

April's edition of Insite will explain more about the wonderful work our team provides to others in the local community!





RGS IN THE COMMUNITY

Hit 'em for **six!**



Summer is fast approaching, and that means it's time for Shelley Cricket Club to don its wonderful whites - proudly sponsored by RGS - and put bat to ball once more!

On Saturday, **April 16**, the club's first XI takes on Slaithwaite at home in the Championship season opener, while the second XI travels to Birkby Rose Hill for their first away game.

We wish both teams the very best of luck and an incredible season of cricket. Everyone at RGS will be cheering you on, from the local oval and beyond!

RGS JOBS

INTERESTED IN JOINING A WINNING TEAM? ...

We're currently looking for a new Assistant Driller and Fieldworks Operative, based at our Huddersfield HQ and to attend jobs nationwide.

[Click here](#) to see the full job description.

FOR MORE INFORMATION ABOUT OUR LATEST VACANCY OR TO APPLY FOR THE ROLE EMAIL [ENQUIRIES@ROGERSGEOTECH.CO.UK](mailto:ENQUIRIES@ROGERSGEOTECH.CO.UK)



INVESTMENT AND DEVELOPMENT

## RGS goes **global!**



OK, not quite to **new shores** - but beyond the boundaries, nonetheless!

This month saw RGS gaining new ground and opening our **fifth office** in beautiful Wales, **ready to support** even more developers, builders and engineers with their site investigation and geotechnical needs.

The **Cardiff** depot joins others in **Burton-on-Trent**, **Hull** and **Carlisle** and our headquarters in Shelley, **Huddersfield**, servicing the UK from (under) the ground and up!

.....

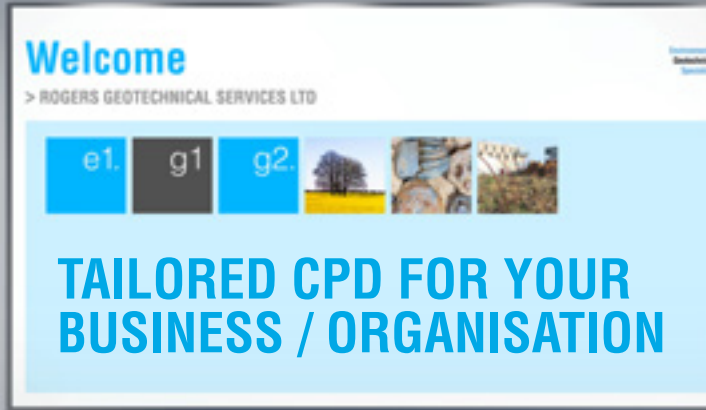
**HOW CAN TEAM RGS HELP YOU?**

**WHATEVER YOUR INVESTIGATION REQUIREMENT, FOR  
PROFESSIONAL GUIDANCE AND A COMPETITIVE QUOTE**

CALL OUR HELPFUL TEAM ON **01484 604354**

Do you need  
**continuing professional  
development support?**  
[CPD]

Environmental  
Geotechnical  
Specialists



Contact us for  
further information

For more information about your investigation requirements  
please don't hesitate to contact us.

Telephone on 01484 604 354

[Click here to email us](#)

CLIENT FEEDBACK

Talk to us

“ The RGS team has been brilliant: their service is seamless  
and efficient. We'll definitely use them again! ”

We're always keen to hear **what clients think** of our service and welcome  
your feedback.

[Click here](#) to email us your comments.

Environmental  
Geotechnical  
Specialists



Rogers Geotechnical Services Ltd  
Telephone 01484 604 354  
Fax 0843 51 599 30  
Email [enquiries@rogersgeotech.co.uk](mailto:enquiries@rogersgeotech.co.uk)  
[www.rogersgeotech.co.uk](http://www.rogersgeotech.co.uk)

